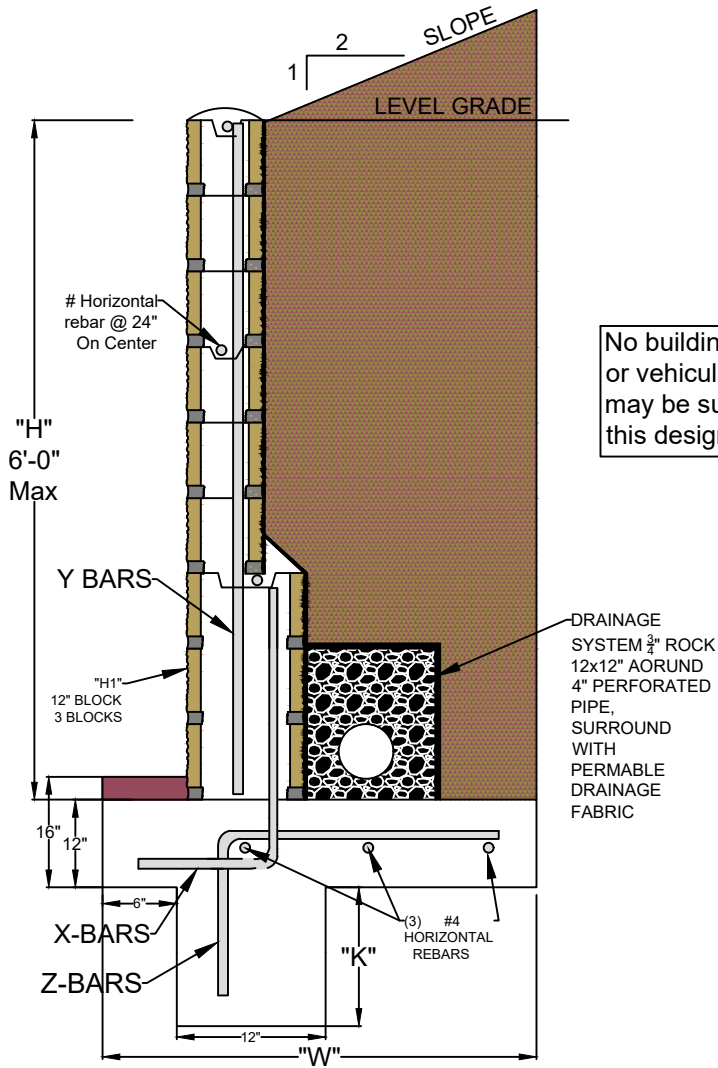
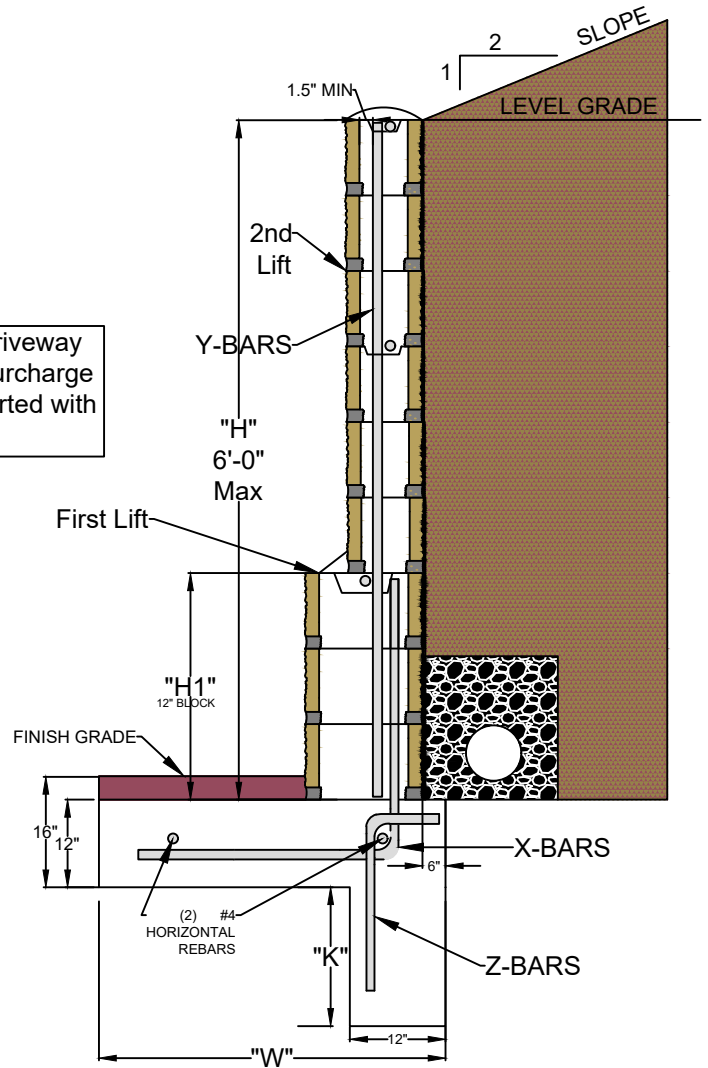


TYPE 1: 6" TOE



TYPE 2: 6" HEEL

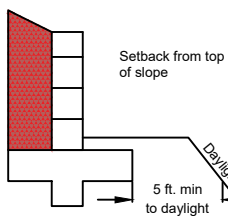


TYPE 1: 6" TOE

GRADE CONDITION	"H" WALL HEIGHT	"H1" (12" BLOCK)	"W" (FOOTING WIDTH)	X BARS	Y BARS	Z BARS	"K" (KEY DEPTH)
SLOPING GRADE AT TOP OF WALL (2:1 MAX SLOPE)	5'-1" to 6'-0"	24"	69"	#4 @ 16"	#4 @ 32"	#4 @ 12"	30"
	4'-1" to 5'-0"	NR	48"	#4 @ 16"	#4 @ 16"	#4 @ 12"	25"
	3'-1" to 4'-0"	NR	30"	#4 @ 32"	#4 @ 32"	#4 @ 32"	16"
	up to 3'-0"	NR	18"	#4 @ 32"	#4 @ 32"	#4 @ 32"	8"
LEVEL GRADE AT TOP OF WALL	5'-1" to 6'-0"	24"	46"	#4 @ 24"	#4 @ 32"	#4 @ 24"	8"
	4'-1" to 5'-0"	NR	36"	#4 @ 24"	#4 @ 24"	#4 @ 24"	7"
	3'-1" to 4'-0"	NR	24"	#4 @ 32"	#4 @ 32"	#4 @ 32"	5"
	up to 3'-0"	NR	21"	#4 @ 32"	#4 @ 32"	#4 @ 32"	N/R

TYPE 2: 6" HEEL

GRADE CONDITION	"H" WALL HEIGHT	"H1" (12" BLOCK)	"W" (FOOTING WIDTH)	X BARS	Y BARS	Z BARS	"K" (KEY DEPTH)
SLOPING GRADE AT TOP OF WALL (2:1 MAX SLOPE)	5'-1" to 6'-0"	24"	39"	#4 @ 16"	#4 @ 32"	#4 @ 12"	28"
	4'-1" to 5'-0"	NR	29"	#4 @ 16"	#4 @ 16"	#4 @ 12"	22"
	3'-1" to 4'-0"	NR	24"	#4 @ 32"	#4 @ 32"	#4 @ 32"	16"
	up to 3'-0"	NR	18"	#4 @ 32"	#4 @ 32"	#4 @ 32"	8"
LEVEL GRADE AT TOP OF WALL	5'-1" to 6'-0"	24"	33"	#4 @ 24"	#4 @ 32"	#4 @ 24"	18"
	4'-1" to 5'-0"	NR	26"	#4 @ 24"	#4 @ 24"	#4 @ 24"	13"
	3'-1" to 4'-0"	NR	20"	#4 @ 32"	#4 @ 32"	#4 @ 32"	7"
	up to 3'-0"	NR	20"	#4 @ 32"	#4 @ 32"	#4 @ 32"	N/R



All cells must be fully grouted
Grout must be type M or S
Grout must be 2000psi or greater portland cement

Concrete must be 2500psi or greater
Steel must overlap 40 bar diameters (20" for #4 bar)
Rebar hooks must extend to length of footing minus 3" clearance on each side.
Rebar must be ASTM 615-40 grade.



City of Banning

Retaining Wall Standards

Banning Building Department 99 E. Ramsey St.

8/09/2024

By Brian Gumpert

Alternate designs or sizes not listed here require design engineering analysis specific to your site criteria