



City of Banning

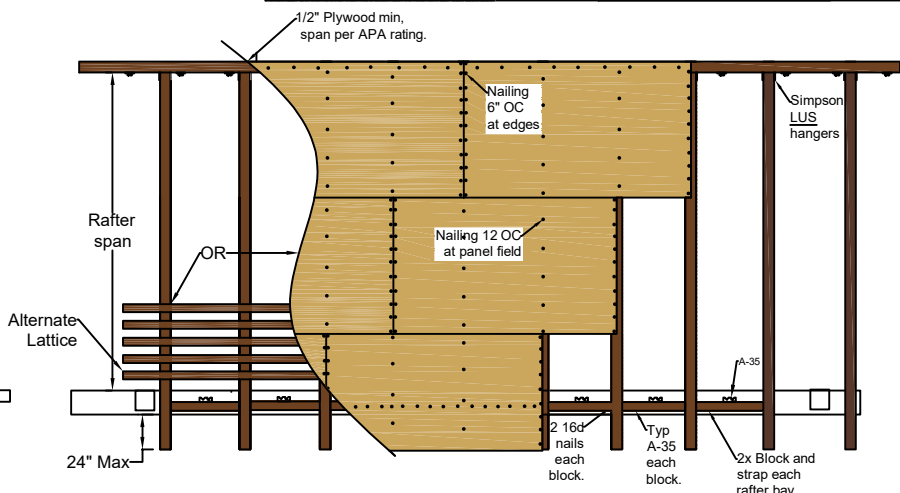
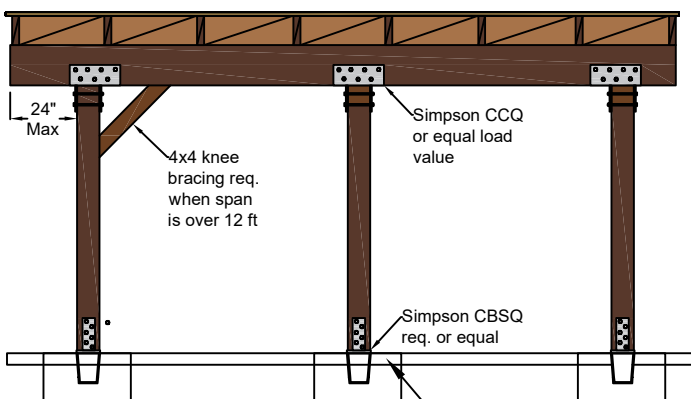
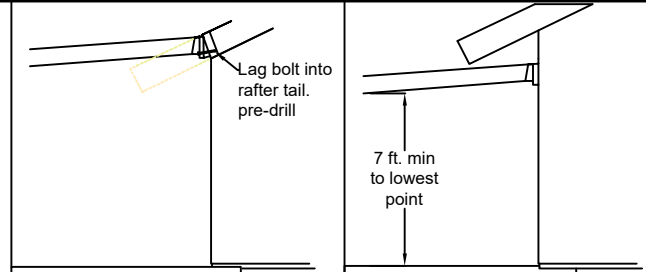
Patio Cover Structural Standard

Banning Building Department 99 E. Ramsey St. Banning, Ca.

2/13/2025

By Brian Gumpert

Alternate designs or installations not listed here require design engineering analysis specific to your site criteria. No geotechnical reports are required.



HIGH FIRE AREAS: Fire areas must comply with all the requirements of California Building Code Chapter 7A. Wood used in these cases must be ignition resistant and comply with 704A.2 through 704.4A. Flame spread shall not exceed 25 or be non-combustible. Roofing material must meet 705A requirements, sloped roofs in fire areas shall have sealed eaves.

Table A RAFTER SPANS

Rafter size	Spacing	Span
2 X 4	12" On Center	9 ft. 10 in.
	16" OC	8 ft. 11 in.
	24" OC	7 ft. 8 in.
2 X 6	12" OC	15 ft. 4 in.
	16" OC	13 ft. 9 in.
	24" OC	11 ft. 3 in.
2 X 8	12" OC	20 ft. 0 in.
	16" OC	18 ft. 2 in.
	24" OC	14 ft. 10 in.
2 X 10	12" OC	20 ft. 0 in.
	16" OC	20 ft. 0 in.
	24" OC	18 ft. 11 in.
4 X 4	12" OC	10 ft. 0 in.
	16" OC	9 ft. 3 in.
	24" OC	7 ft. 8 in.
4 X 6	12" OC	15 ft. 11 in.
	16" OC	13 ft. 9 in.
	24" OC	11 ft. 3 in.
4 X 8	12" OC	20 ft. 0 in.
	16" OC	18 ft. 2 in.
	24" OC	14 ft. 10 in.

Table B HEADER SPANS

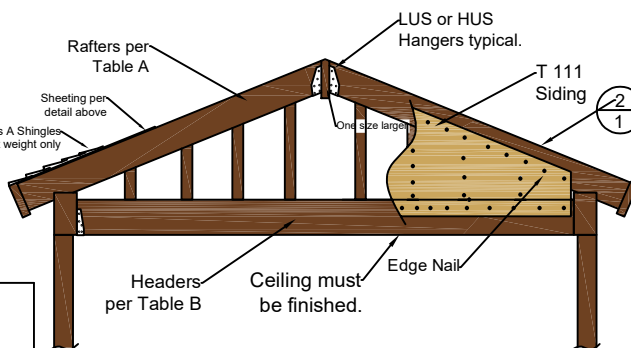
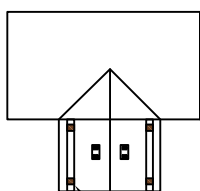
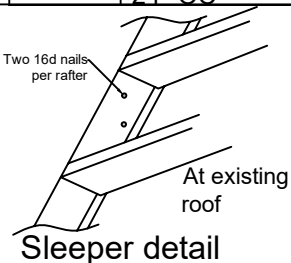
Rafter span	Size	Span
UP TO 12 ft.	4 X 6	8 ft. Max
	4 X 8	10 ft. Max
	4 X 10	12 ft. Max
	4 X 12	14 ft. Max
12 ft. 1 in. TO 20 ft.	4 X 8	8 ft. Max
	4 X 10	10 ft. Max
	4 X 12	12 ft. Max
	4 X 14	14 ft. Max

Table C FOOTING SIZE

BASED ON 1000 PSF SOIL LOAD PRESURE
18 in. Wide
12 in. Deep
24 in. Wide
18 in. Deep

Table D LEDGER BOLTS

ALL LAG BOLTS SHALL BE PRE-DRILLED 1/4 in.
3/8 in. Ø X 5 in. LONG @ 16 in. OC STAGGERED
(2) 3/8 in. Ø X 5 in. LONG Every 16 in. On Center



Alternate design

(Use all tables above for footings, beam and rafter sizing)

Flashings must be 24" wide at valleys.
30 lbs min underlayment in one or two layers.
Nails must be hot dipped galvanized.

